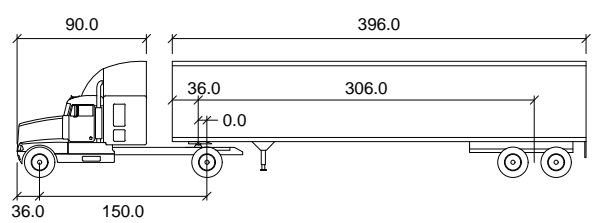
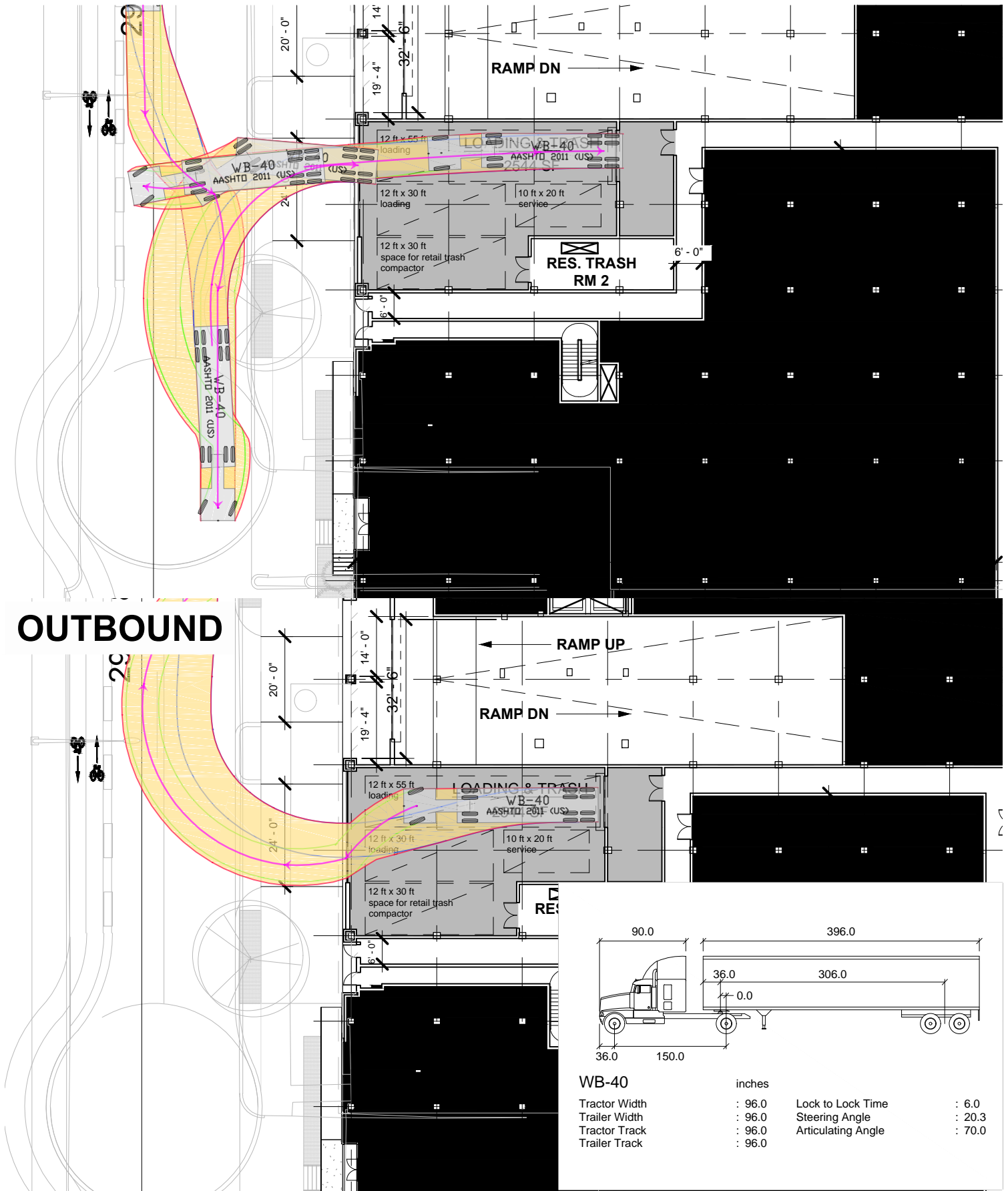


O:\PROJECTS\7001 - 7500\7020 BUZZARD POINT MASTER PLANNING\AUTOTURNS\FOR PUBLIC SPACE COMMITTEE\AUTOTURNS_PUBLIC SPACE RESUBMISSION.DWG



WB-40	inches	
Tractor Width	: 96.0	Lock to Lock Time : 6.0
Trailer Width	: 96.0	Steering Angle : 20.3
Tractor Track	: 96.0	Articulating Angle : 70.0
Trailer Track	: 96.0	

**WB-40
Berth 1**

River Point
Washington, DC



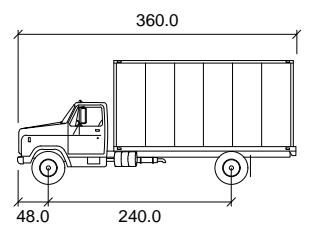
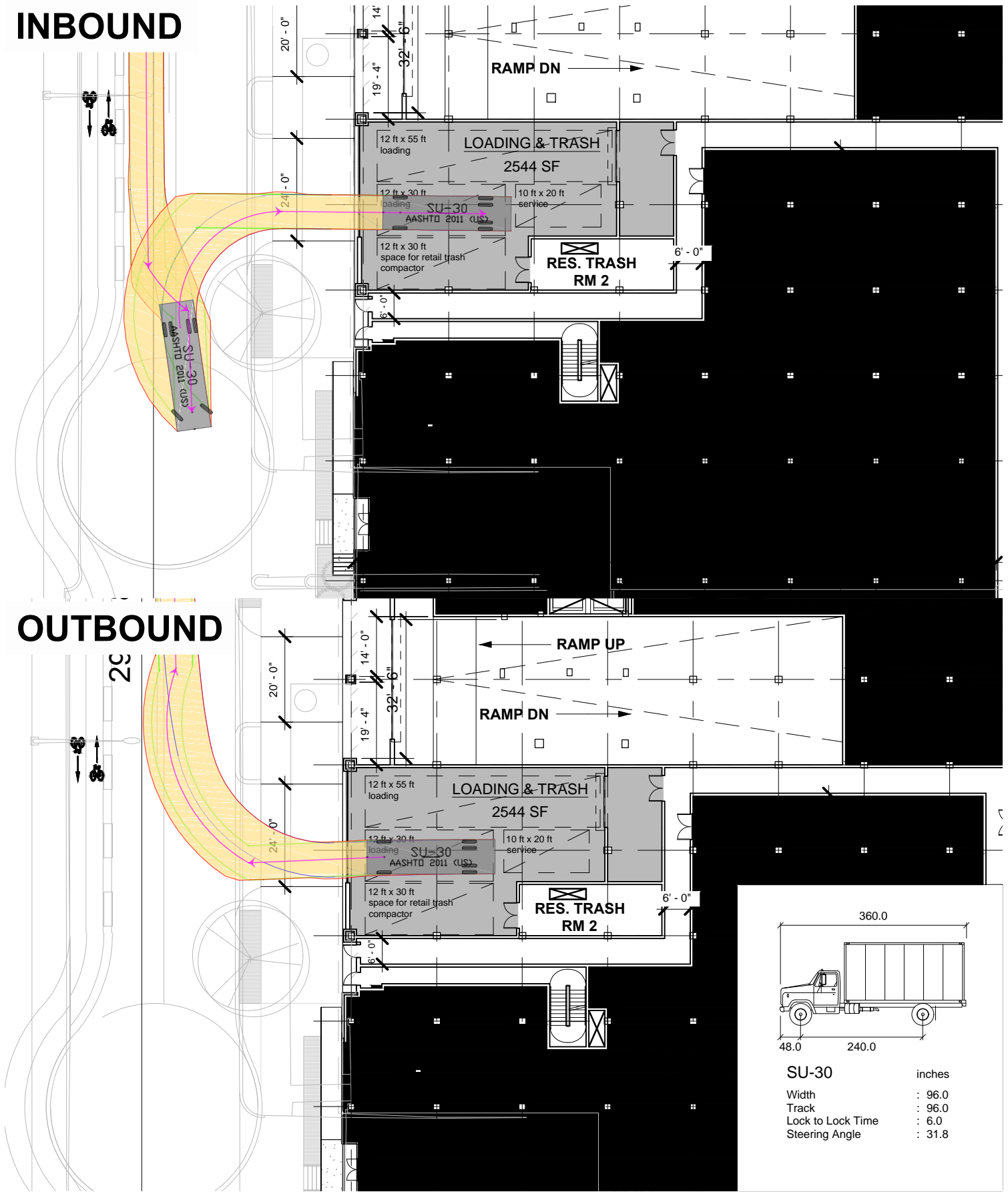
- Vehicle Body
- Front Tire Tread
- Rear Tire Tread
- Directional Path
- Vehicle Path



O:\PROJECTS\7001 - 7500\7020 BUZZARD POINT MASTER PLANNING\AUTOTURN\FOR PUBLIC SPACE COMMITTEE\AUTOTURN_PUBLIC SPACE RESUBMISSION.DWG

INBOUND

OUTBOUND



SU-30	inches
Width	: 96.0
Track	: 96.0
Lock to Lock Time	: 6.0
Steering Angle	: 31.8

SU-30 Berth 2
River Point
Washington, DC

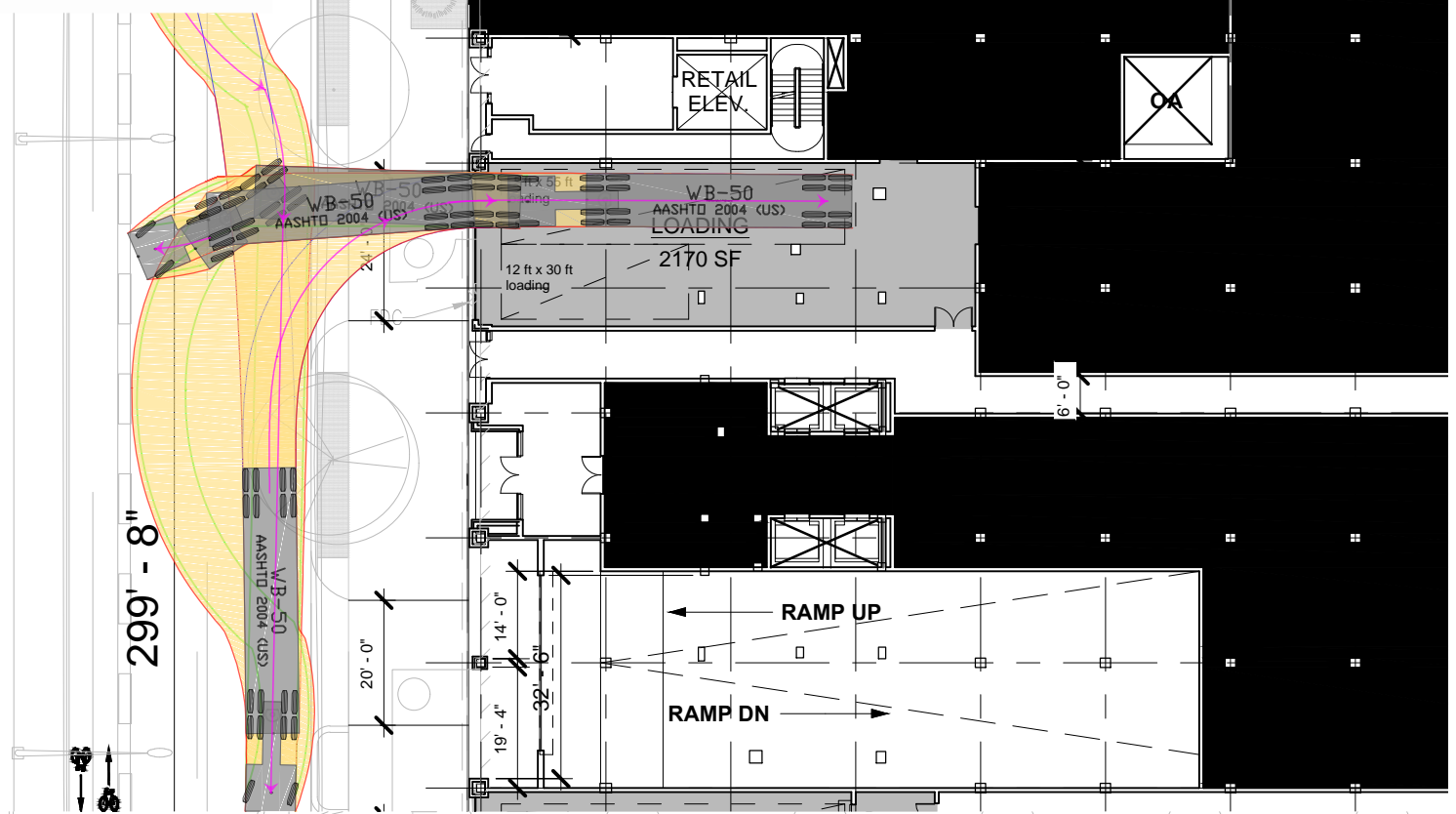


- Vehicle Body
- Front Tire Tread
- Rear Tire Tread
- Directional Path
- Vehicle Path

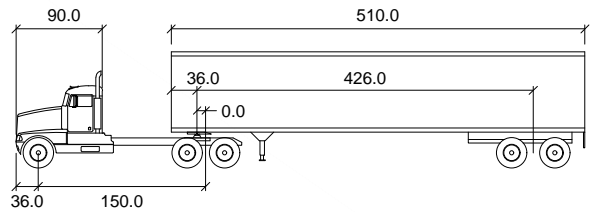
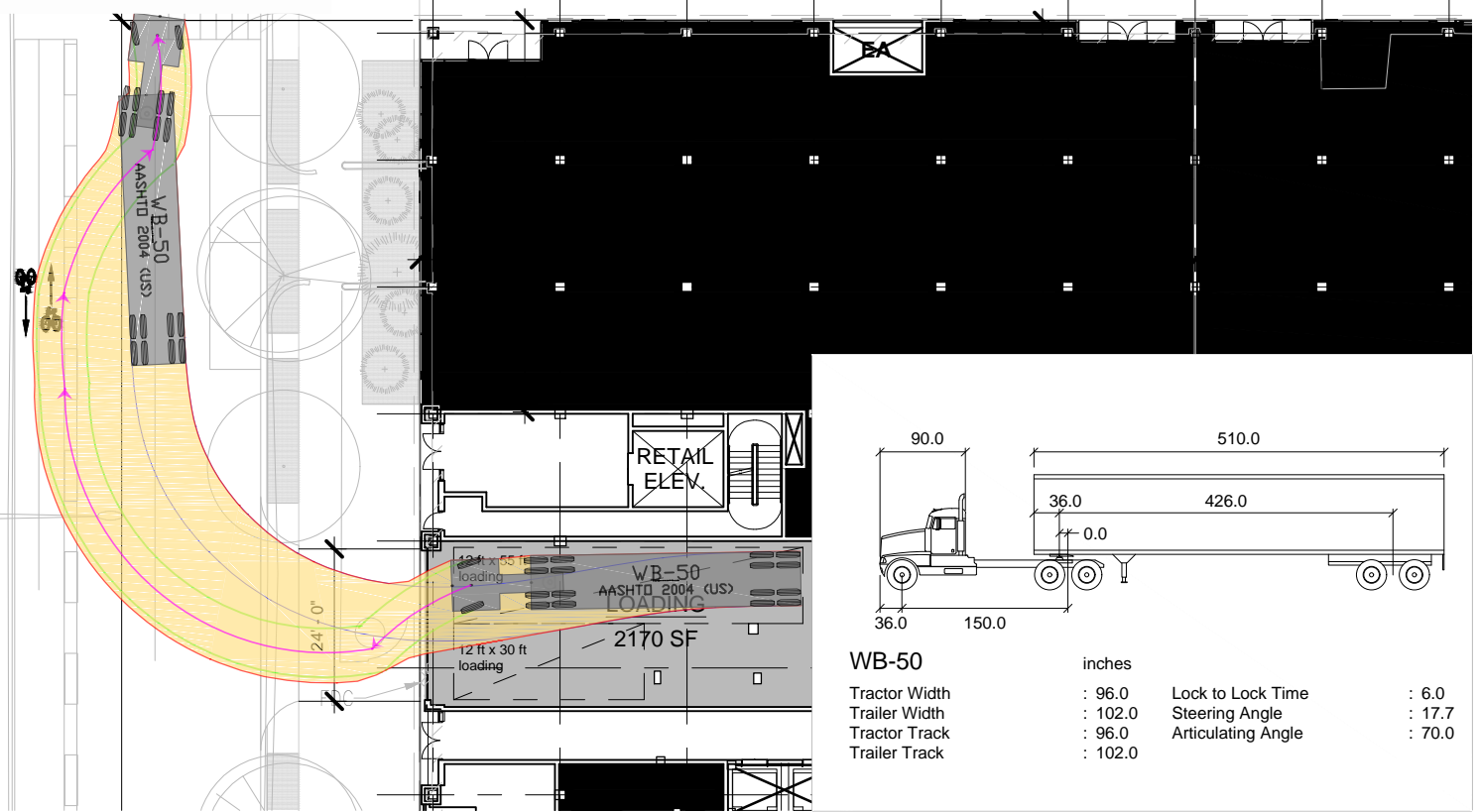


O:\PROJECTS\7001 - 7500\7020 BUZZARD POINT MASTER PLAN\GRAPHICS\AUTOTURN\RS FOR PUBLIC SPACE COMMITTEE\AUTOTURN_RS_PUBLIC SPACE RESUBMISSION.DWG

INBOUND

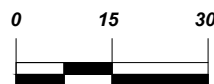


OUTBOUND



WB-50	inches		
Tractor Width	: 96.0	Lock to Lock Time	: 6.0
Trailer Width	: 102.0	Steering Angle	: 17.7
Tractor Track	: 96.0	Articulating Angle	: 70.0
Trailer Track	: 102.0		

**WB50
Berth 3**
River Point
Washington, DC

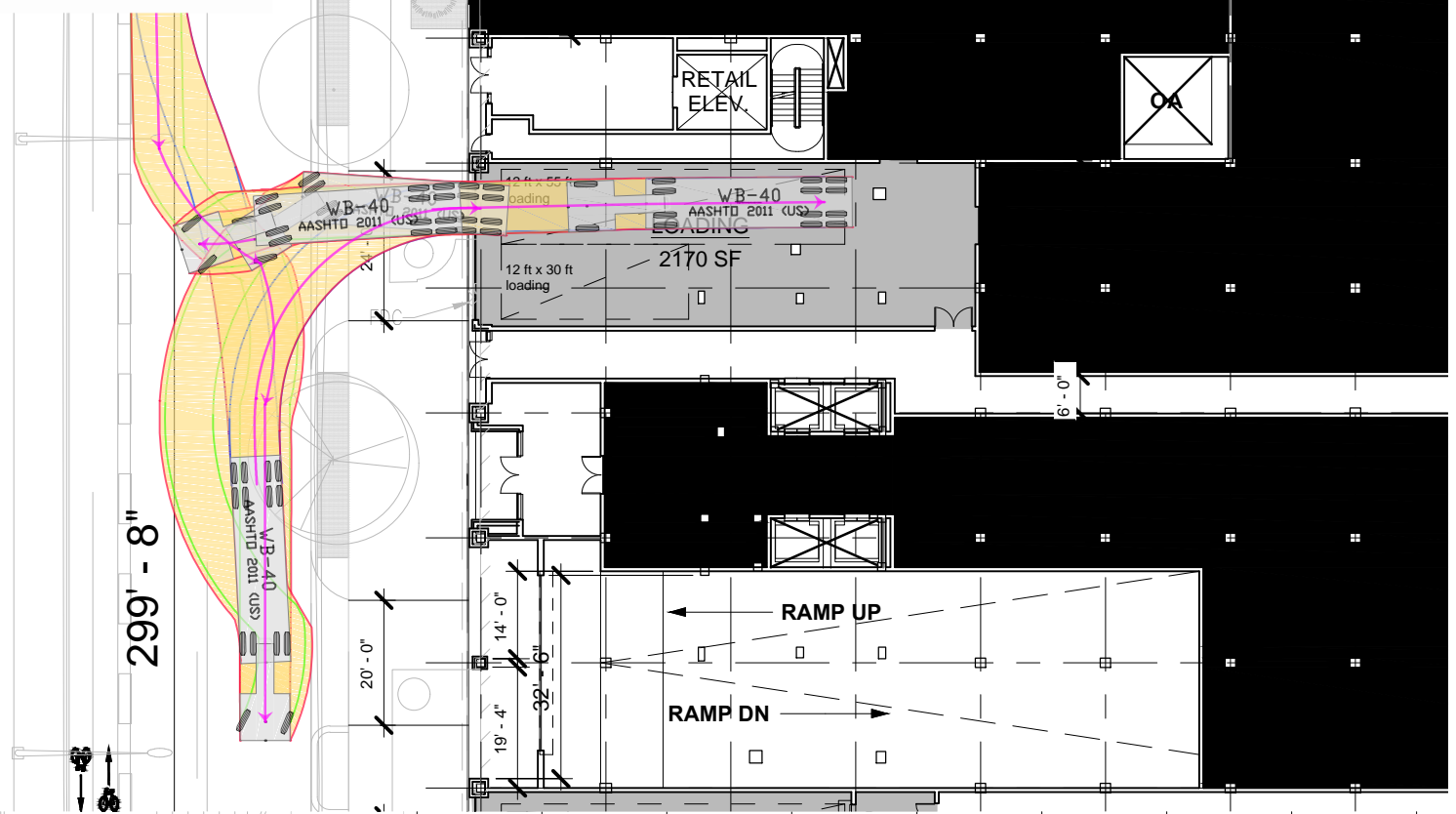


- Vehicle Body
- Front Tire Tread
- Rear Tire Tread
- Directional Path
- Vehicle Path

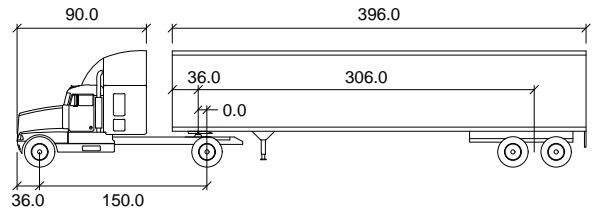
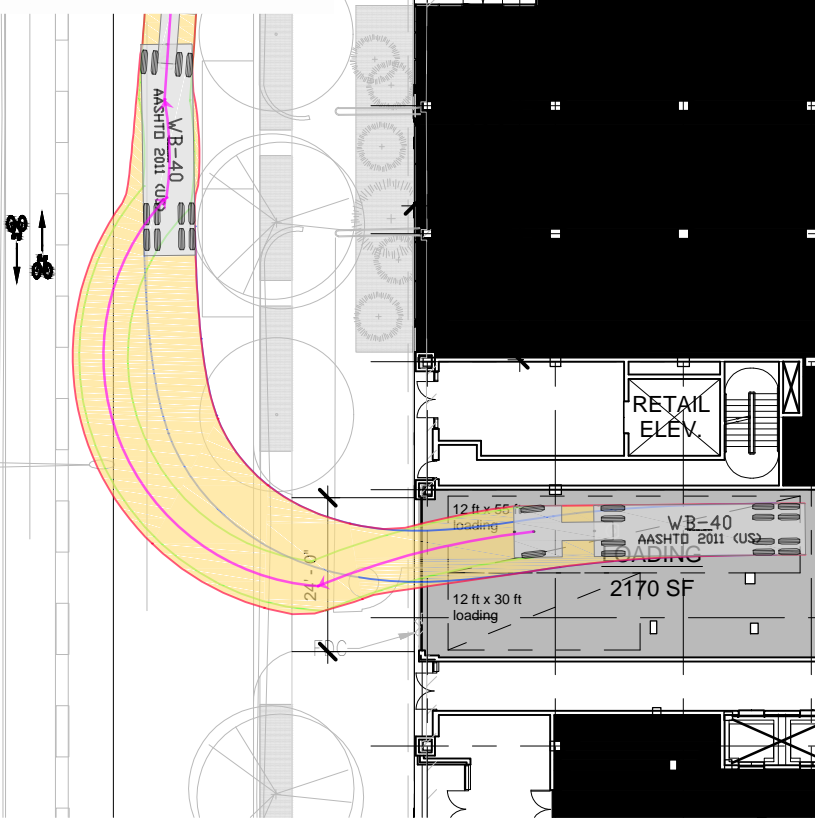


O:\PROJECTS\7001 - 7500\7020 BUZZARD POINT MASTER PLAN\GRAPHICS\AUTOURNS\FOR PUBLIC SPACE COMMITTEE\AUTOURNS_PUBLIC SPACE RESUBMISSION.DWG

INBOUND

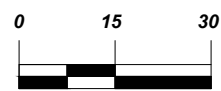


OUTBOUND



WB-40	inches	
Tractor Width	: 96.0	
Trailer Width	: 96.0	
Tractor Track	: 96.0	Lock to Lock Time : 6.0
Trailer Track	: 96.0	Steering Angle : 20.3
		Articulating Angle : 70.0

**WB40
Berth 3**
River Point
Washington, DC



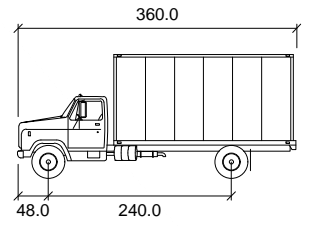
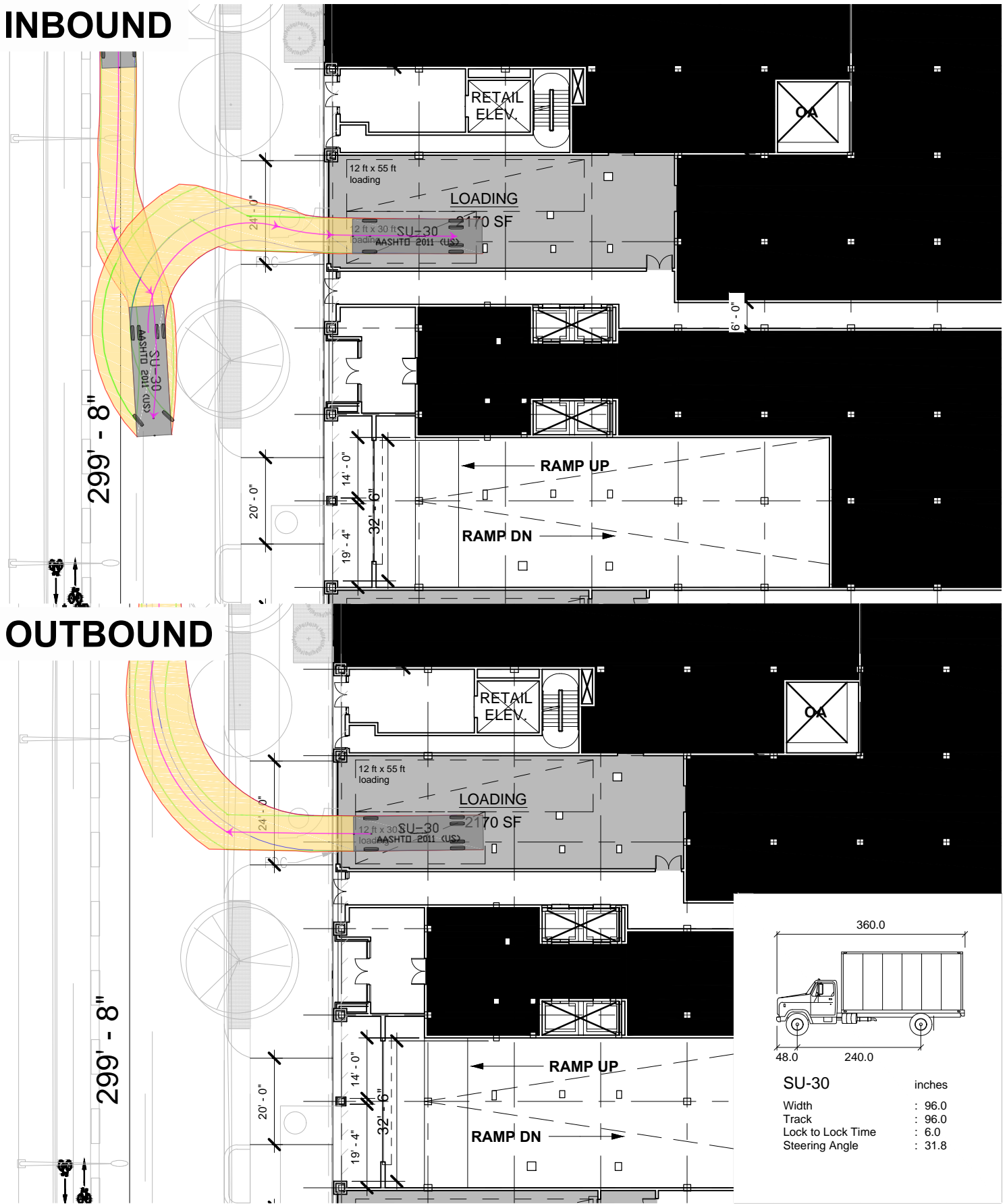
- Vehicle Body
- Front Tire Tread
- Rear Tire Tread
- Directional Path
- Vehicle Path



O:\PROJECTS\7001 - 7500\7020 BUZZARD POINT MASTER PLAN\GRAPHICS\AUTORUNS\FOR PUBLIC SPACE COMMITTEE\AUTORUNS_PUBLIC SPACE RESUBMISSION.DWG

INBOUND

OUTBOUND



SU-30	inches
Width	: 96.0
Track	: 96.0
Lock to Lock Time	: 6.0
Steering Angle	: 31.8

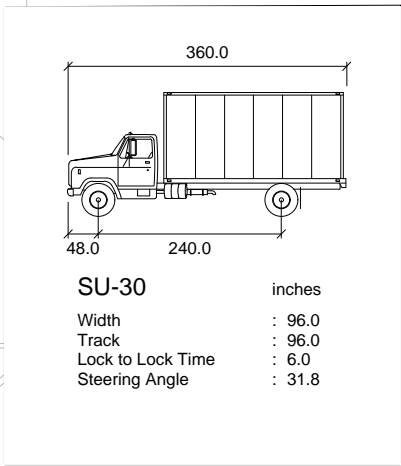
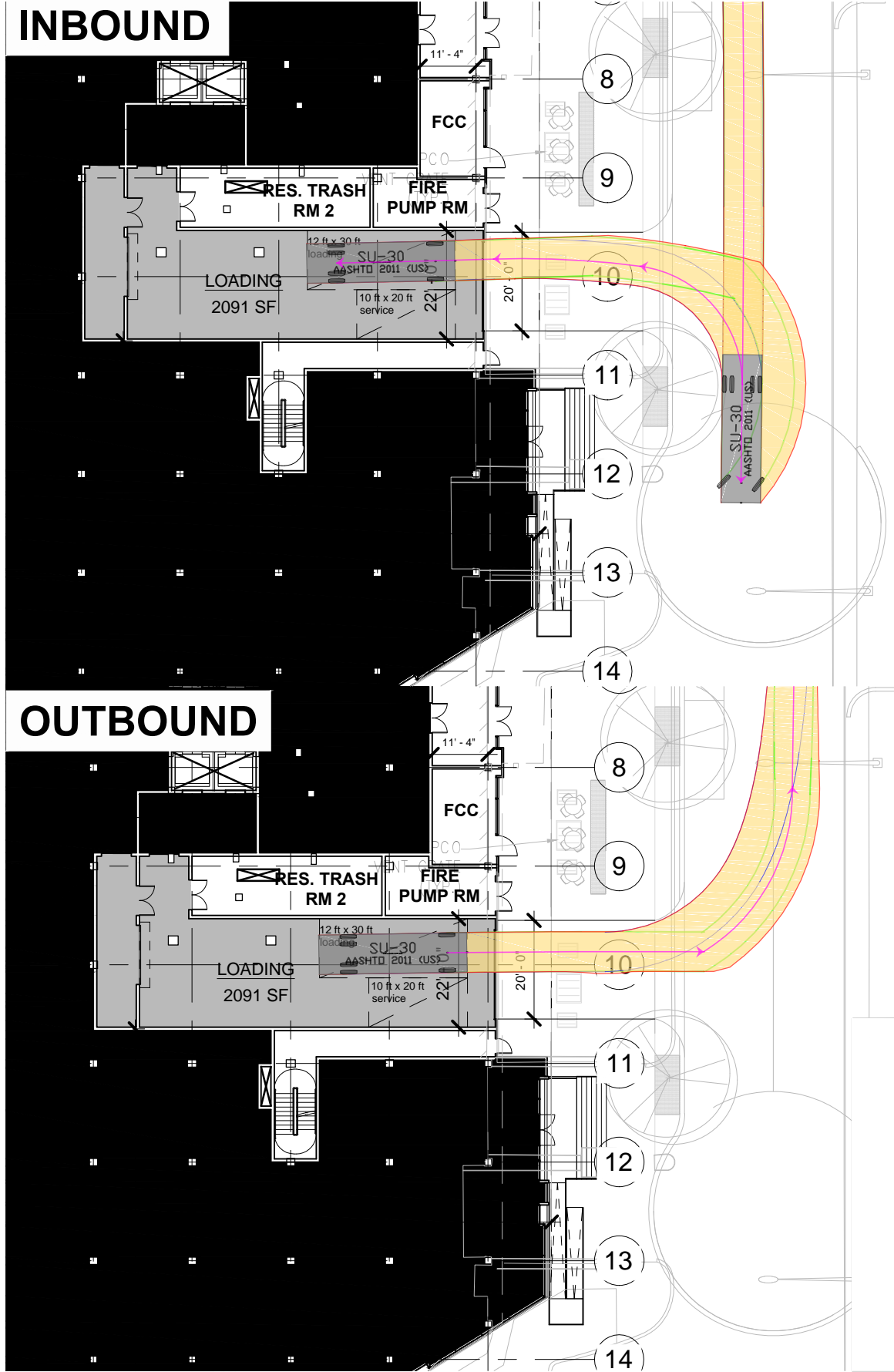
SU-30
Berth 4
River Point
Washington, DC



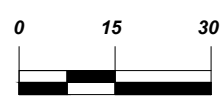
- Vehicle Body
- Front Tire Tread
- Rear Tire Tread
- Directional Path
- Vehicle Path



O:\PROJECTS\7001 - 7500\7020 BUZZARD POINT MASTER PLAN\GRAPHICS\AUTOURNS\FOR PUBLIC SPACE COMMITTEE\AUTOURNS_PUBLIC SPACE RESUBMISSION.DWG



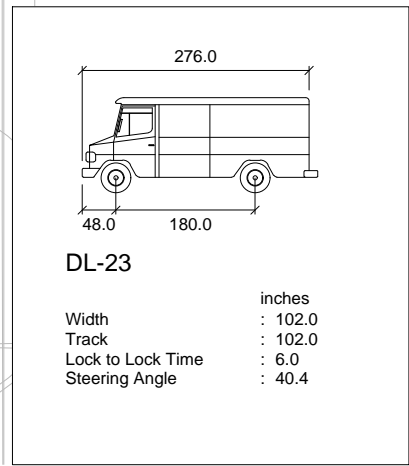
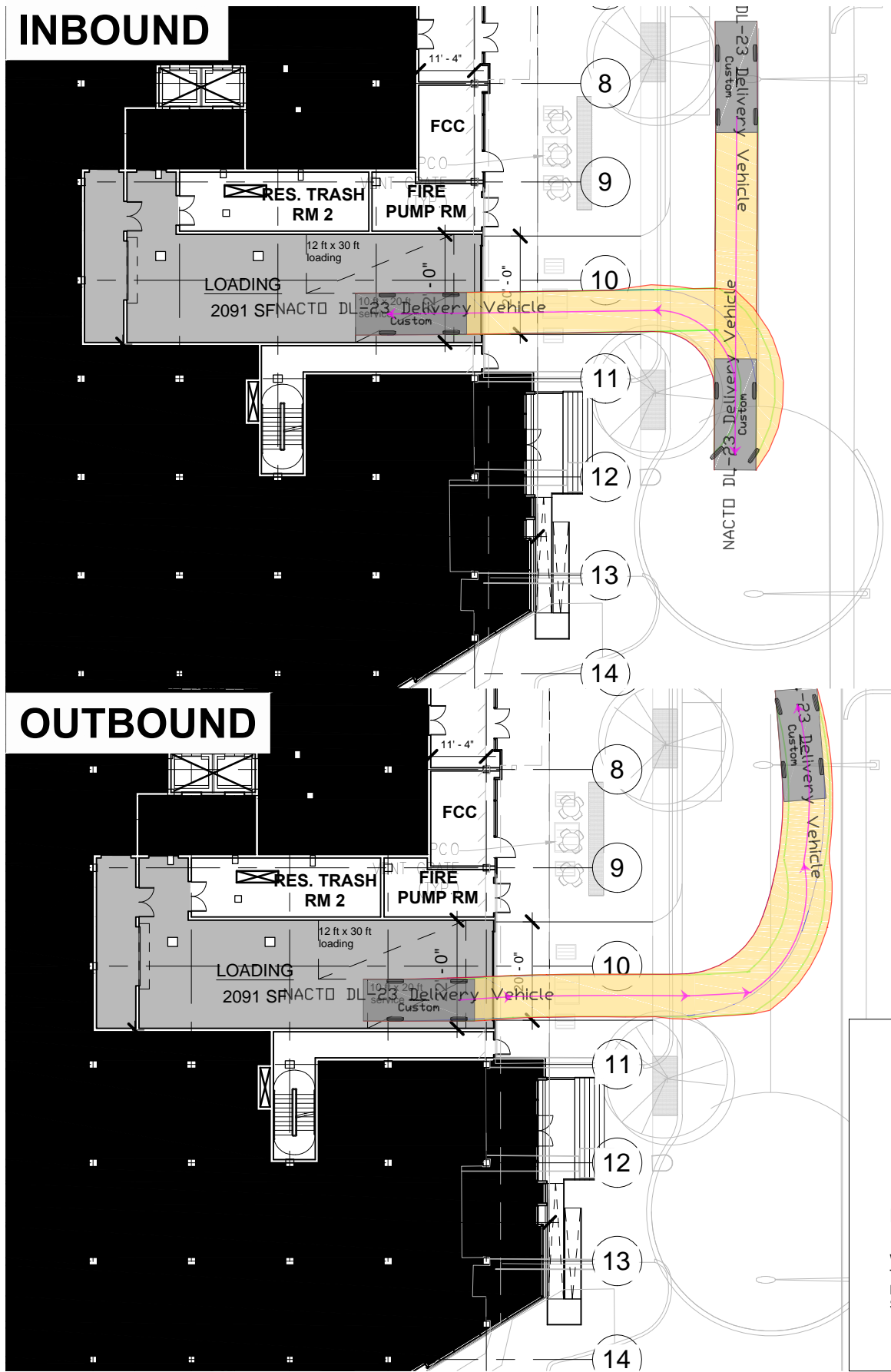
SU-30
Berth 5
River Point
Washington, DC



- Vehicle Body
- Front Tire Tread
- Rear Tire Tread
- Directional Path
- Vehicle Path

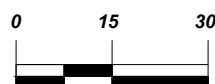


O:\PROJECTS\7001 - 7500\7020 BUZZARD POINT MASTER PLANNING\GRAPHICS\AUTOTURN\RS FOR PUBLIC SPACE COMMITTEE\AUTOTURN_RS_PUBLIC SPACE RESUBMISSION.DWG



Service/Delivery Vehicle
Service Space

River Point
Washington, DC



- Vehicle Body
- Front Tire Tread
- Rear Tire Tread
- Directional Path
- Vehicle Path

